

Measuring for your mantel is a simple and quick procedure. Below is an explanation of each needed measurement.

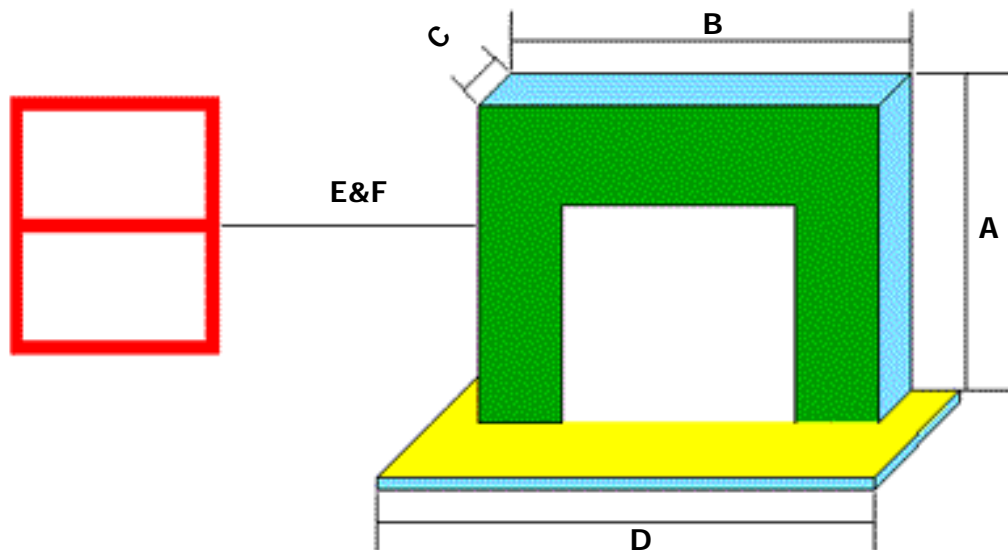
A: Height of facing material from hearth or floor. (i.e. brick, tile marble etc...)

B: Width of facing material (note make several measurements across the width and use the shortest measurement).

C: Depth of facing material (again make several measurements of the depth and use the deepest in this case).

D: Width of the hearth if you have one. (This could be a raised hearth that is above the floor level or one that is even with the floor).

E&F: The nearest non-moveable object from the facing material on both the right and left side of the facing material. (i.e. window, door, wall, heat vent, etc...)



A	
B	
C	
D	
E	
F	